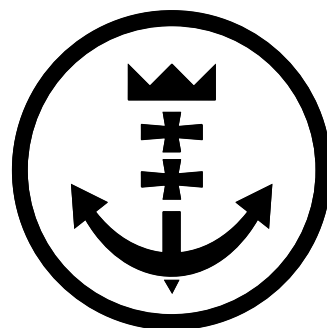


**PORT PLAN FOR THE MANAGEMENT
OF WASTE FROM SHIPS
AT THE PORT OF GDAŃSK**



**PORT
GDAŃSK**

Developed by:
Port of Gdansk Authority

Authors:

Tomasz Kolicki, M.A.

Agata Miecznikowska, M.A.

Marta Bystrzanowska, Ph.D., Eng.

Gdansk, February 2025

Table of Contents

1. BASIS OF THE STUDY	4
2. SCOPE OF THE STUDY	4
3. ENTITY MANAGING THE PORT OF GDAŃSK	4
4. IMPORTANT INFORMATION ON WASTE COLLECTION	5
4.1. Entities exempt from the obligation to submit information on waste and general comments	6
4.2. Irregularities concerning waste collection	6
5. ASSESSMENT OF DEMAND ON PORT FACILITIES DESIGNED TO COLLECT WASTE FROM SHIPS, CONCERNING THE DEMAND OF SHIPS USUALLY CALLING IN AT THE PORT OF GDAŃSK	6
6. QUANTITIES AND TYPES OF WASTE COLLECTED FROM SHIPS AND PROCESSED IN PORT WASTE COLLECTION FACILITIES	7
6.1. Characteristics of waste oil and its mixtures plus conditions for its collection	7
6.2. Wastewater characteristics and collection requirements	8
6.3. Solid waste characteristics and collection requirements	9
6.4. Residues from flue gas treatment - characteristics and collection conditions	11
6.5. Cargo residues - characteristics and collection conditions	11
6.6. Waste that is not collected	12
(7). TYPE AND CAPACITY OF PORT FACILITIES COLLECTING WASTE FROM SHIPS	12
7.1. Type and capacity of port facilities collecting waste oil and its mixtures from ships	12
7.2. Type and capacity of port facilities for solid waste collection	16
7.3. Type and capacity of port facilities for wastewater collection	18
7.4. Type and capacity of port facilities for collection of residues from flue gas treatment ..	21
7.5. Type and capacity of port facilities for collection of cargo residues	21
8. DESCRIPTION OF WASTE COLLECTION FROM SHIPS AND STORAGE PROCEDURES (including wastewater, residues from flue gas treatment and cargo residues) INCLUDING LOCATIONS AND BUSINESS HOURS OF PORT FACILITIES COLLECTING WASTE FROM SHIPS	22
8.1. General information	22
8.2. Procedures of notifying about waste collection (waste oil, solid waste including cat. 1 and wastewater, residues from flue gas treatment and cargo residues):	24
8.3. Procedures of collecting waste oil; solid waste including cat. 1 and wastewater, residues from flue gas treatment and cargo residues :	24
8.4. Document flow procedures:	25
8.5. Procedure for collecting cargo residues by the Collector from a ship	26
9. BILLING SYSTEM DESCRIPTION	27
10. PROCEDURE FOR REPORTING IRREGULARITIES CONCERNING PORT FACILITIES FOR WASTE COLLECTION FROM SHIPS	29
11. COOPERATION WITH OTHER ENTITIES IN TERMS OF WASTE AND SHIP CARGO RESIDUE MANAGEMENT	30
13. DESCRIPTION OF PROCEDURES FOR SOCIAL CONSULTATIONS CONDUCTED DURING THE PORT PLAN UPDATING PROCESS	31
14. DESCRIPTION OF METHODS OF RECORDING THE CURRENT USE OF PORT FACILITIES FOR WASTE COLLECTION FROM SHIPS AND QUANTITIES OF WASTE DISPOSED OF BY SHIPS	31
15. ANNEXES:	32

1. BASIS OF THE STUDY

The purpose of the study is to update the “*Port Waste Management Plan for Ships in the Port of Gdańsk*”, approved by the decision of the Marshal of the Province of Gdańsk No. *DROŚ-S.7240.7.2023.KP* of 12 February 2024, in accordance with Article 16, section 1 of the Act of 12 May 2022 on port waste reception facilities (Journal of Laws of 2022, item 1250), section 2 of the Act of 12 May 2022 on port facilities for the reception of waste from ships (Journal of Laws of 2022, item 1250).

2. SCOPE OF THE STUDY

The material scope of the study complies with the Act of 12 May 2022 on port facilities for receiving waste from ships (Journal of Laws of 2022, item 1250).

3. ENTITY MANAGING THE PORT OF GDAŃSK

Managing entity name

The entity managing the Port of Gdańsk is:

Port of Gdańsk Authority S.A., with its registered office in Gdańsk (hereinafter referred to as ZMPG S.A.)

Registered office and address

- ZMPG S.A. is located at: ul. Zamknięta 18, 80-955 Gdańsk
- General contact data for ZMPG S.A:

Administrative Office:

Tel: (+48) 58 737 91 00
Fax: (+48) 58 737 93 08
email: info@portgdansk.pl
www.portgdansk.pl

President of the Board Office:

Tel: (+48) 58 737 93 00
Fax: (+48) 58 737 93 08

Chief Port Dispatcher:

Tel: (+48) 58 737 64 83/84, 58 737 93 05
Fax: (+48) 58 737 63 76
Email: odpady@portgdansk.pl

Environmental Protection Department:

Tel: (+48) 58 737 93 17, (+48) 58 737 93 12, (+48) 58 737 96 65
e-mail: odpady-srodowisko@portgdansk.pl

Legal form of the port managing entity

Port of Gdansk Authority S.A. is a public limited company and commercial company operating under the Act on Sea Ports and Harbours and the Code of Commercial Companies. KRS (National Court Register) at District Court Gdańsk-Północ in Gdańsk, 7th Commercial Division of the National Court Register. The company shareholders are: State Treasury, the Gdańsk gmina and eligible employees. Port of Gdańsk Authority S.A. is the only entity managing the Port of Gdańsk. The activity of Port of Gdańsk Authority S.A. involves managing port property and infrastructure, promoting, suggesting and planning port development, constructing, expansion, maintenance and upgrading of the port infrastructure, acquiring property for port development purposes, providing services related to using the port infrastructure, and providing access to port waste collection facilities for ships to collect waste for recovery or neutralisation.

Port services are provided by private companies.

The boundaries of the Port of Gdańsk are specified in the Ordinance of the Minister of Transport, Construction and Maritime Economy of 29 May 2012 on establishing the boundaries of the seaport in Gdańsk from the sea, roadstead and land side. The Port of Gdańsk map is provided in Annex 1.

4. IMPORTANT INFORMATION ON WASTE COLLECTION

Pursuant to Art. 6 of the Act of 12 May 2022 on port waste collection equipment (Journal of Laws of 2022, item 1250), a port or marina managing entity is obliged to ensure that ships using the port or marina have access, on its premises, to port-based ship waste collection facilities, in a manner and within the scope specified in the above-mentioned Act.

Information on formalities related to the collection of waste and cargo residues from ships is available on the Port of Gdańsk website tab: “Business” - Services - Waste collection, address: <https://www.portgdansk.pl/biznes/uslugi/odbior-odpadow/>.

The up-to-date *Price list for port services and ship waste management* is also available at the Port of Gdańsk website tab: “Business” - Services - Port tariffs, address: <https://www.portgdansk.pl/biznes/uslugi/taryfy-portowe/>. ZMPG S.A. reserves the right to modify this *Price list*.

If the collection of certain types and quantities of waste from a ship by the port collection facilities is impossible, the ship's captain or their agent will receive information about this fact from the Main Port Dispatcher's Team¹, immediately after submitting the notification of their intention to deliver waste. Simultaneously, the nearest port or marina ready to collect waste and cargo residues from the ship will be indicated.

1

4.1. Entities exempt from the obligation to submit information on waste and general comments

Pursuant to Art. 10, section 4 of the Act of 16 March 1995 on preventing marine pollution by ships, the following entities are exempt from the obligation to submit information on the waste prior to calling at the Port of Gdańsk:

- ships with a gross tonnage (GT) below 300 units;
- fishing vessels, historic ships and recreational vessels with a length less than 45 metres.

4.2. Irregularities concerning waste collection

In case a captain, an agent or another crew member breaches the regulations concerning releasing waste to port collection facilities and fails to inform the port about the waste or cargo residues on board of their ship, i.e. fails to provide, within applicable deadlines, information on waste present on board of a ship through the NSW control and information system, they can be subjected to administrative pecuniary penalties imposed by the Director of the Maritime Office in Gdynia.

The ship bears all the consequences for not meeting the above-mentioned procedures for reporting waste for collection, deadlines or cancelling the waste collection service after entering the port.

In the event of damage to the property due to reasons attributable to the ship, the responsible party will be obliged to pay for any damage and other financial burdens ZMPG S.A. incurs as a result of the necessity to repair or restore the infrastructure. The fee shall be paid irrespective of the obligation to pay an intermediate, special or additional fee or other waste collection charges.

5. ASSESSMENT OF DEMAND ON PORT FACILITIES DESIGNED TO COLLECT WASTE FROM SHIPS, CONCERNING THE DEMAND OF SHIPS USUALLY CALLING IN AT THE PORT OF GDAŃSK

The assessment of demand on port facilities designed to collect waste from ships has been conducted on the basis of data collected over the last years. The assessment concerns the demand of ships usually calling in at the port of Gdańsk. Information on the forecast types and quantities of ship waste is provided in Table 1.

Table 1 Quantity and types of waste collected from ships in 2021 – 2023 and forecast for 2024 – 2025

Year	2021 [Mg]	2022 [Mg]	2023 [Mg]	2024 [Mg]	2025 [Mg]
Waste oil	3,431.13	4,166.545	4,531.71	5,000	5,500
Residues from flue gas treatment	151.19	201.08	30.38	250	250
Wastewater	8,771.80	9,830.5	1,018.00	1,500	2,000
Solid waste	4,845.88	7,422.32	6,787.07	8,000	9,500

The number and type of ship waste collection facilities at the Port of Gdańsk is sufficient to manage the forecast quantities and types of waste collected from ships.

6. QUANTITIES AND TYPES OF WASTE COLLECTED FROM SHIPS AND PROCESSED IN PORT WASTE COLLECTION FACILITIES

On the Port of Gdańsk premises, ships are able to release all types of waste, except for the waste specified in section 6.6. However, pursuant to Article 5, section 5 of the Act of 12 May 2022 on port facilities for collecting waste from ships (Journal of Laws of 2022, item 1250), waste from ships is understood as all waste generated during ship operation, loading, unloading and cleaning, and which is subject to the provisions specified in Annexes I, II, IV, V and VI to the MARPOL Convention, including cargo residues and passively fished waste.

Therefore, ZMPG S.A. informs that the collection of waste which does not meet the criteria of ship waste within the meaning of Art. 5, section 5 of the above-mentioned Act, in particular waste generated under the following circumstances:

- a) during the performance of repair or modernisation works (e.g. metal packaging and plastic packaging contaminated with hazardous substances or containing residues thereof, i.e. paint, oil and solvent cans, transport pallets, furniture, window joinery, significant quantities of lamps, fluorescent tubes, etc.);
- b) replacement of used parts (e.g. batteries, components of ship's machinery and equipment, etc.);
- c) replacement of equipment items (e.g. faulty electric and electronic equipment, i.e. household appliances, electro-waste, mooring lines, etc.);

is not waste collected within the standard waste collection procedure and up-to-date the *Price list for ship waste collection and management services*.

Waste not considered as ship waste in the meaning of Art. 5, section 5 of the above-mentioned Act can be collected on a commercial basis, following consultations both with the waste collection entity and ZMPG S.A.

Within the framework of the standard procedure, the Port of Gdańsk Authority S.A. provides collection services for the following types of waste:

- waste oil and its mixtures - listed in Annex I to the MARPOL 73/78 Convention;
- wastewater - listed in Annex IV to the MARPOL 73/78 Convention;
- solid waste - listed in Annex V to the MARPOL 73/78 Convention, including the guidelines for implementing this Annex regarding waste removed with cargo, other than cargo residues;
- exhaust gas cleaning residues, as per Annex VI to the MARPOL 73/78 Convention;
- cargo residues conforming to the definition provided in Art 5, section 10 of the Act of 12 May 2022 on port facilities for collecting waste from ships.

6.1. Characteristics of waste oil and its mixtures plus conditions for its collection

During normal ship operation, waste oil is generated that can be divided into liquid, semi-liquid and solid pollutants.

Liquid oil pollutants include:

- oiled bilge water;
- waste oil from fuel and lubricant centrifuges;
- oil and fuel leaks from the fuel and lubricant system;

- spent and contaminated lubrication oils;
- oiled water from tanker cargo spaces.

Semi-liquid and solid pollutants include:

- sludge - solid waste from fuel and lubricant centrifuges;
- residues from engine rod end areas and generated while cleaning flushing windows for combustion engines;
- dirty and spent grease from machine rooms and deck equipment.

If the following requirements are met, a ship is not required to pay the special fee:

- the delivery joint used for disposal of bilge water should meet the requirements specified in Regulation 13 of Annex I to MARPOL 73/78;
- on-board pump capacity should not be less than 7.5 m³/h,
- bilge water pH should be within the range: 6.5 - 9.0;
- waste oils must be heated to the temperature required for efficient collection, but not higher than 60°C,
- solid waste with an oil content must be packed in marked bags or non-returnable containers.

6.2. Wastewater characteristics and collection requirements

Pursuant to Annex IV to MARPOL 73/78, i.e. “Regulations on preventing pollution from ship wastewater” - Regulation 1 *Definitions*, wastewater is:

- wastewater and other waste from any type of toilets and urinals;
- wastewater from medical facilities (isolation wards, clinics, etc.) flushed through the washbasins, bathtubs and scuppers present in these rooms;
- wastewater from areas where livestock is kept, or
- other wastewater mixed with the above-mentioned wastewater.

Communal and industrial wastewater

Pursuant to the MARPOL 73/78 Convention, wastewater includes:

- effluents and other waste water from various types of toilets, urinals and toilet floor drains;
- effluents from medical rooms discharged through the washbasins, bathtubs and floor drains located in these rooms;
- effluents from rooms where livestock is kept;
- other spent water mixed with the above-mentioned wastewater;
- effluents from washing rooms, washbasins, bathrooms, pantries and kitchens.

If the following requirements are met, a ship is not required to pay the special fee:

- wastewater disposal should meet the requirements specified in Regulation 10 of Annex IV to the MARPOL 73/78;
- on-board pump capacity should not be lower than 7.5 m³/h.

ZMPG S.A. also informs that the physical and chemical parameters of wastewater released to the port collection facilities must not exceed the permissible wastewater pollution values specified in Annex 2. On a request by ZMPG S.A., random tests of wastewater samples will be performed to verify allowable pollution values for the wastewater discharged to the port

collection facilities. In case these values are exceeded, a ship is charged with a special fee defined in the *Price list for port services and waste management services* under wastewater disinfection.

6.3. Solid waste characteristics and collection requirements

Pursuant to the definition provided in Annex V to MARPOL 73/78, solid waste is understood as all kinds of food product waste, household and operational wastes, all plastics, cargo residues, incinerator ash, cooking oil, fishing equipment and animal carcasses, which arise during normal ship operation and which can be disposed of permanently or periodically, with the exception of substances specified or listed in other Annexes to the Convention, which also includes passively fished waste. It is forbidden to discharge any waste to the sea, except for the cases specified in Regulations 4, 5, 6 and 7 of Annex V to the Convention. Except for the cases specified in Regulation 7 to Annex V, discharging plastics to the sea, including, but not limited to: synthetic ropes, synthetic fishing nets, plastic waste bags and ashes from incineration of plastics, is prohibited. Except for the cases specified in Regulation 7, discharging cooking oil to the sea is forbidden.

The breakdown of waste types described below conforms to the implementation guidelines for Annex V to MARPOL 73/78:

- **Waste** - understood as all kinds of food product waste, household and operational wastes, all plastics, cargo residues, incinerator ash, cooking oil, fishing equipment and animal carcasses, which arise during normal ship operation and which can be disposed of permanently or periodically, with the exception of substances specified or listed in other Annexes to the Convention, which also includes fished waste. Waste does not include fresh fish or their parts resulting from fishing activities conducted during a sea voyage or resulting from aquacultural activities involving the transport of fish, including shellfish, for placement in a culture centre, as well as transport from such centres to the shore for processing.
- **Plastic** - solid material containing (as an indispensable component) one or more macromolecular polymer(s) formed (shaped) during its production process or during process of manufacturing the finished product with a thermal and/or pressure method. Plastics come with varied material properties, from hard and brittle to soft and resilient. “All plastics” is understood as any waste that consists of or contains plastics in any form, including plastic fibre ropes, plastic waste bags and ash from plastics burnt in incinerators.
- **Food product waste** - understood as any spoilt food products, including fruit, vegetables, dairy products, meat products and leftovers generated on a ship (including Category 1 waste).
- **Domestic waste** - understood as any waste generated in ship living quarters. Grey wastewater is not included in the domestic waste category.
- **Cooking oil** - understood as any type of edible oil or animal fat used or intended for use in the preparation or cooking of food, excluding dishes prepared using these oils.
- **Incinerator ash** – understood as ash and slag generated in ship incinerators used to incinerate waste.
- **Operational waste** - understood as any type of solid waste (including sludge) not covered in other Annexes, which are collected on a ship in the course of normal activities or ship operation, or used during reloading or stowage activities. Operational waste also includes cleaning agents and additives contained in the water used to wash the holds and external surfaces of a ship. Operational waste does not include grey wastewater, bilge water

or other similar discarded waste, the generation of which is necessary for the ship's operation of the vessel, taking into account the guidelines created by the Organisation.

- **Animal carcasses** – understood as the bodies of animals transported by ship as cargo that die or are killed during a sea voyage.
- **Fishing gear** – understood as any physical equipment or its part or an assembly of such equipment that can be placed on water, in water or on the seabed for subsequent capture or harvesting of saltwater or freshwater organisms.
- **Maintenance waste** – understood as materials accumulated in the engine room and deck department during ship maintenance and operation, such as: soot, machinery waste, scraped paint, deck rubbish, cloths, oily rags, etc.
- **Cargo residues** – understood as residues of all cargo not described in other Annexes to the Convention, which remain on the deck or in the holds following loading or unloading, also as a result of excess loading or unloading or spillage, whether in a dry or wet state or suspended in flushing water, but excluding cargo dust remaining on the deck after sweeping or dust on the external ship surfaces.
- **Passively fished waste** – waste collected in nets during fishing operations.

Waste types as per amendments to Annexes to the International Convention for the Prevention of Pollution from Ships and related designations are presented in Table 2.

Table 2 Waste breakdown into types pursuant to MARPOL 73/78

DESIGNATION as per Annex V to MARPOL 73/78	WASTE TYPES
A	Plastics
B	Food waste
C	Domestic waste
D	Cooking oil
E	Incinerator ash
F	Operational waste
G	Animal carcasses
H	Fishing gear
I	Electronic waste
J*	Cargo residues (non-HME)
K*	Cargo residues (HME)
* Waste designated as “J” and “K” is collected as cargo residues. HME - harmful for marine environment non-HME - not harmful for marine environment	

Food product waste collected at the Port of Gdańsk includes byproducts of animal origin defined in Regulation (EC) no. 1069/2009 of the European Parliament and of the Council of 21 October 2009 laying down the health rules as regards animal byproducts and derived products not intended for human consumption, and repealing Regulation (EC) no. 1774/2002 (Animal byproducts Regulation) and in line with Commission Regulation (EU) no. 142/2011 of 25 February 2011 implementing Regulation (EC) no. 1069/2009 of the European Parliament and of the Council laying down the health rules as regards animal byproducts and derived products not intended for human consumption and implementing Council Directive 97/78/EC as regards certain samples and items exempt from veterinary checks at the border under that Directive, and

in line with Commission Delegated Regulation (EU) 2019/2122 of 10 October 2019 supplementing Regulation (EU) 2017/625 of the European Parliament and of the Council as regards certain categories of animals and goods exempted from official controls at border control posts, specific controls on passengers' personal luggage and on small consignments of goods sent to natural persons which are not intended to be placed on the market and amending Commission Regulation (EU) no. 142/2011.

The above-mentioned waste (as far as its collection from ships is concerned) includes:

- catering waste from international means of transport, i.e. kitchen waste from ships;
- products of animal origin, intended for individual consumption, imported from third countries (i.e. sandwich waste).

For sanitary and epidemiological reasons, all food product waste is collected at the Port of Gdańsk as byproducts of animal origin belonging to Category 1.

If the following requirements are met, a ship is not required to pay the special fee:

- Solid waste must be segregated into categories listed in Annex V to MARPOL 73/78 and placed in labelled bags or non-returnable containers.
- Category 1 solid waste must be placed in airtight packaging or in covered, non-returnable containers secured against leakages and labelled (in Polish) as “kat.1 – wyłącznie do usunięcia” or (in English) as “cat.1 - strictly for removal”.

6.4. Residues from flue gas treatment - characteristics and collection conditions

Ships are equipped with flue gas treatment systems designed to remove dust from flue gases and equipment reducing the sulphur oxide SO_x and nitrogen oxide NO_x contents. Flue gas treatment system operation results in wastewater discharge. They generate process wastewater, i.e. solutions of sulphate(IV) and sodium sulphate(VI). Moreover, solid and semi-liquid waste is generated, i.e. separated soot and dust particles collected in a tank.

SO_x and NO_x treatment systems generate waste in the form of spent filters. Larger components are replaced in shipyards, during ship inspections and repairs. Smaller elements can be disposed of in a port as waste from flue gas treatment.

If the following requirements are met, a ship is not required to pay the special fee:

- solid waste must be placed in airtight and marked bags or non-returnable containers;
- liquid waste must be placed in watertight non-returnable containers or, for larger quantities, transferred “over the ship’s side” via ship pumps.

6.5. Cargo residues - characteristics and collection conditions

Cargo residues are generated following cargo unloading and reloading operations conducted on ships and quays.

Cargo residues contain not only harmful substances, but also inert, harmless and slightly harmful substances. These include, for example, coal, aggregate, grain, fuels, agricultural products transported in bulk, steel products: sheets and forgings, and timber.

No conditions for the collection of cargo residues for which a ship will be charged a special fee are specified. Cargo residues should be removed on the basis of physical, chemical and biological properties of the substance in question and they may require special treatment in comparison with the standard treatment related to waste / wastewater disposal.

6.6. Waste that is not collected

ZMPG S.A. does not collect:

- controlled substances, pursuant to Annex VI to MARPOL 73/78, specified in Regulation (EC) no. 1005/2009 of the European Parliament and of the Council of 16 September 2009 on substances that deplete the ozone layer;
- medical waste as defined in Art. 3, section 1, item 8 of the Waste Act of 14 December 2012.

Acceptance of controlled substances generated during repairs, replacement, assembly or dismantling of equipment and systems installed on board a ship must be ensured by the operator performing these operations, by themselves.

(7). TYPE AND CAPACITY OF PORT FACILITIES COLLECTING WASTE FROM SHIPS

Article 5, section 9 of the Act of 12 May 2022 on port facilities for collecting waste from ships (Journal of Laws of 2022, item 1250) defines port waste collection facilities as any fixed, mobile or floating equipment designed to collect and manage waste received from ships.

Port of Gdańsk Authority S.A. does not have its own port waste collection facilities. In order to collect waste from ships calling in at the Port of Gdańsk, specialist companies are used with suitable for waste collecting equipment and the capacity to collect waste received from ships. All entities contracted to provide services consisting in collecting waste hold all permits and decisions required by the applicable laws.

7.1. Type and capacity of port facilities collecting waste oil and its mixtures from ships

The entity contracted to provide services consisting in collecting, transporting and managing waste oil and its mixtures is:

ECO POINT P.S.A.

ul. Na Ostrowiu 1

80-958 Gdańsk

NIP (Tax ID): 5833171490

REGON (Business ID): 222159786

KRS (National Court Register no.): 0000523010

BDO (Waste Database): 000001451

Collection method: Collection of bilge water and sludge from the land side is done by means of marked tanker trucks parked alongside a ship. Bilge water and sludge are collected from the water side by a marked barge, while the oily solid waste is collected directly from the ship onto a marked vehicle parked alongside it.

(*from areas not in perpetual usufruct of ZMPG S.A., collection is subject to an additional special charge specified in the *Price list for ship waste collection and management services*).

Ultimately, liquid waste oils and their mixtures are transferred to the “OKO-aquaclean” waste treatment plant located in Gdańsk, at ul. Na Ostrowiu 1 (premises of Gdańska Stocznia “Remontowa” im. J. Piłsudskiego S. A.) and belonging to the company Eco Point P.S.A., where waste is subjected to correct recycling or neutralisation processes.

As per the applicable regulations, “OKO-aquaclean” is classified as a waste management plant for hazardous waste recovery or neutralisation, with a processing capacity of more than 10 Mg per day using the following methods:

- physical and chemical treatment;
- repeated oil refining or other methods of oil reuse.

The production capacity of the plant in question is currently 10,000 Mg/year (46,800 Mg/year following extension).

The company holds an indefinite term integrated permit for “OKO-aquaclean” operation, ref. no.: DROŚ-SO.7222.68.2016/2017.AŁ, issued on 12 June 2017 by the Marshall of the Pomorskie Province (as amended).

Moreover, Eco Point P.S.A. holds the decision, ref. no. WŚ-I-6233.60.2014.HŚ.296642, issued on 9 December 2014 by the Mayor of the City of Gdańsk (as amended and corrected), being a permit to collect waste within a section of plot no. 1, precinct 0069 Gdańsk, located in Gdańsk, at ul. Na Ostrowiu 1, and is in the process of obtaining a waste collection permit for the new storage site. Eventually, the total capacity of waste collection sites will amount to 455.600 Mg.

See Tables 3 - 6 for the quantity and types of port waste oil port facilities.

Waste is collected, depending on the ship mooring location:

1. on the land side, using:

Table 3 Eco Point P.S.A. waste collection equipment

Semi-trailer - tank	<ul style="list-style-type: none"> • 2 pieces - load-carrying capacity, respectively: 25,400 kg and 29,190 kg
WUKO septic tanker trucks	<ul style="list-style-type: none"> • 1 piece - load-carrying capacity 8,530 kg
Semi-trailer - tank with a waste disposal system	<ul style="list-style-type: none"> • 5 pieces - load-carrying capacity, respectively: 10,480 kg, 14,200 kg, 23,800 kg, 23,740 kg and 24,800 kg
Dropside body vans	<ul style="list-style-type: none"> • 5 pcs
Tractor units	<ul style="list-style-type: none"> • 4 pcs
Hook lift type lorries	<ul style="list-style-type: none"> • 2 pcs
Semi-trailer for containers	<ul style="list-style-type: none"> • 1 pcs

2. on the water side, using:

Table 4 Eco Point P.S.A. waste collection equipment

Tank barges	<ul style="list-style-type: none"> • 1 piece - capacity: 950 m³
--------------------	---

	<ul style="list-style-type: none"> • 1 piece - capacity: 780 m³ • 1 piece - capacity: 100 m³
Tug boat	<ul style="list-style-type: none"> • 1 pcs "TOMCIO"

Moreover, the following equipment is used for liquid waste transfer:

Table 5 Eco Point P.S.A. waste collection equipment

Pumps for transferring oiled water and waste oil	<ul style="list-style-type: none"> • 6 rotary pumps, capacity: up to 30 m³/h • 16 diaphragm pumps, capacity: up to 60 m³/h • 4 diaphragm pumps, capacity: up to 40 m³/h • 2 diaphragm pumps, capacity: up to 12 m³/h
---	--

The following facilities are used for waste transport and temporary storage:

Table 6 Eco Point P.S.A. waste collection equipment

Stationary and transport tanks and containers	<ul style="list-style-type: none"> • 6 tanks for a hook lift type lorry, capacity, respectively: 8 m³, 11 m³, 12.5 m³, 13 m³, 13 m³ and 18 m³ • 3 tanks, capacity 48 m³ each • 7 containers for a hook lift type lorry, capacity, respectively: 4 x 19.5 m³, 20 m³ and 2 x 30 m³ • 4 containers, capacity, respectively: 25 m³, 27 m³ and 2 x 31 m³ • 2 platform-type containers for a hook lift type lorry
--	---



Hook lift type lorry

Source: ECO POINT P.S.A.



Tank truck

Source: ECO POINT P.S.A.



Barge

Source: ECO POINT P.S.A.

7.2. Type and capacity of port facilities for solid waste collection

The entity contracted to provide services consisting in collecting, transporting and managing solid waste is:

PREZERO SERVICE PÓLNOC Sp. z o.o.

ul. Równa 17B

80-067 Gdańsk

NIP (Tax ID): 5911003833

REGON (Business ID): 190943843

KRS (National Court Register no.): 0000119181

BDO (Waste Database): 000005374

Collection method:

Waste is collected directly from a ship onto vehicles parked under its side. It is not possible to collect solid waste from the water side.

Exceptional cases:

- a) waste collection on the Naftoport premises where the solid waste collector is obliged to collect waste on an ongoing basis by manually transporting it away from the fuel pier, loading it and transporting it to the waste management site;
- b) waste collection on the Westerplatte Ferry Terminal (PŻB passenger ferries) where the solid waste collector leaves waste containers to be taken by the quay operator to the side of the ferry and places waste in them during the voyage. The quay operator removes the waste from the ferry during its stay in the Port of Gdańsk, and the collection service is provided after the ferry departs from the Port of Gdańsk. Empty spare containers are placed on the Westerplatte Ferry Terminal premises (in a selected location) and the quay operator transfers them onto the ferry after full containers are removed.

The PreZero Service Północ Sp. z o.o. company holds the decision of the Marshal of the Pomorskie Province of 17/04/2013, ref. no.: DROŚ-S.7244.10.2013, being a permit for waste collection and treatment (as amended and corrected) in the plant located at ul. Równa 17A and 17B in Gdańsk. The company submitted an application for adapting the permit (decision of 17/04/2013, ref. no. DROŚ-S.7244.10.2013) for waste collection and treatment to the requirements of the Waste Act. However, due to the provisions of the Act of 7 October 2022 on specific solutions to protect electricity consumers in 2023 due to the electric power market situation (Journal of Laws of 2022, item 2127), the Waste Act was supplemented with Art. 226a, which has resulted in extending the validity of waste collection or treatment permits by 31/12/2025. The company is in the process of obtaining a new waste collection permit. The solid waste is transported by the collector from the Port of Gdańsk to the landfill site in Gdańsk – Szadółki operated by Zakład Utylizacyjny Sp. z o.o.

Table 7 Port collection facilities for solid waste generated on ships

Item	Equipment type	Number of pieces
1.	Hook lift type lorries	6
2.	Minibuses	3
3.	Open, box-type, hook lift and steel containers	33



Hook lift type lorry

Source: PreZero Service Północ Sp. z o.o.



Minibus

Source: PreZero Service Północ Sp. z o.o.



Closed steel container

Source: PreZero Service Północ Sp. z o.o.

7.3. Type and capacity of port facilities for wastewater collection

The entity contracted to provide services consisting in collecting, transporting and managing wastewater is:

Ecol-Unicon Sp. z o.o.

ul. Równa 2

80-067 Gdańsk,

NIP (Tax ID): 584-13-83-568

REGON (Business ID): 191129286

KRS (National Court Register): 0000194595

BDO (Waste Database): 000016491

In accordance with the provisions of Agreement No. 022/ZIS/2024, Ecol-Unicon Sp. z o. o. collects wastewater through a subcontractor:

Dankan Sp. z o.o.

ul. Marynarki Polskiej 163

80-868 Gdańsk,

NIP (Tax ID): 556-10-06-505

REGON (Business ID): 091144171

KRS (National Court Register): 0000161648

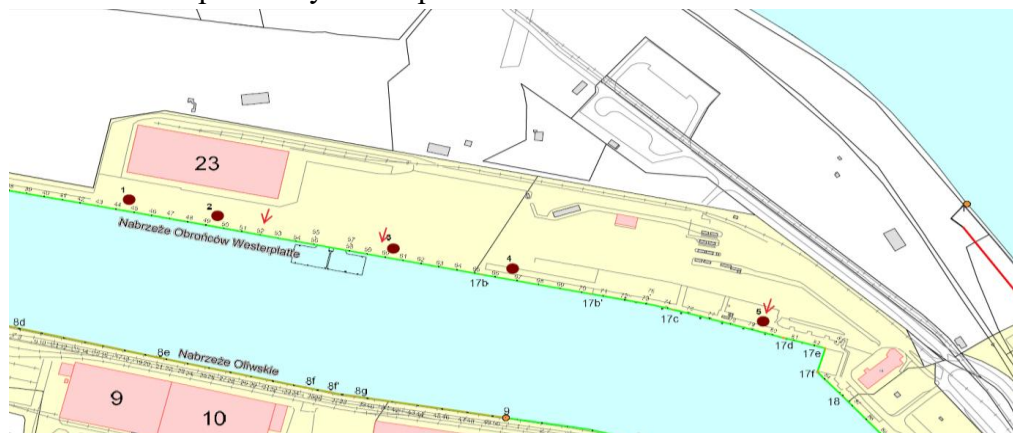
BDO (Waste Database): 000041469

Collection method:

Sanitary wastewater is collected from ships through:

- 5 permanent wastewater collection points on the Obrońców Westerplatte Quay, capacity: 40 m³/h;
- 2 permanent wastewater collection points on the Ziółkowskiego Quay, capacity: 40 m³/h;

- 1 permanent wastewater collection points on the Wisłoujście Quay, capacity: 4 m³/h (for small vessels). The wastewater volume is measured with a flowmeter. At other quays, waste is collected by waste removal vehicles parked by the ship's side.



Locations of permanent wastewater collection points - Westerplatte Quay

Source: ZMPG S.A. Environmental Protection Team



Locations of permanent wastewater collection points - Ziolkowskiego Quay

Source: ZMPG S.A. Environmental Protection Team



Locations of permanent wastewater collection points - Wisłoujście Quay

Source: ZMPG S.A. Environmental Protection Team

Dankan Sp. z o.o. operates in the field of emptying septic tanks and transporting liquid waste in the city of Gdańsk in accordance with the Decision of the Mayor of Gdańsk of 15 January 2024, code: WŚ-VIII.62.33.18.2023.BK.

The wastewater is transferred from the Obrońców Westerplatte Quay to the Mechanical-Biological Treatment Plant in the North Port owned by Port of Gdańsk Authority S.A., and it is operated by Gdańskie Wodociągi S.A., subject to an agreement, by Ecol-Unicon Sp. z o.o. From 1 January 2025, wastewater from the Obrońców Westerplatte Quay shall be discharged directly into the municipal sewage system.

Wastewater from the Ziółkowskiego Quay is discharged to the municipal sewerage system, and the wastewater from the Wisłoujście Quay and other quays is collected by waste removal vehicles and transferred to the “Wschód” Treatment Plant. There is no possibility of collecting wastewater from the water side.

Table 8 Wastewater treatment plants

Item	Plant type
1.	Mechanical-Biological Treatment Plant in the North Port in Gdańsk Q avg. d = 180 m ³ /d Q max. h = 17 m ³ /h

Table 9 Port collection facilities for wastewater generated on ships

Item	Equipment type	Number of pieces
1.	Septic tanker truck with a capacity of 12 m ³	1.
2.	Septic tanker trucks with a capacity of 9 m ³	3



*Septic tanker truck
Source: Dankan Sp. z o.o.*

7.4. Type and capacity of port facilities for collection of residues from flue gas treatment

The entity contracted to provide services consisting in collecting, transporting and managing residues from flue gas treatment is:

**ECO POINT P.S.A.
ul. Na Ostrowiu 1
80-958 Gdańsk**

**NIP (Tax ID): 5833171490
REGON (Business ID): 222159786
KRS (National Court Register no.): 0000523010
BDO (Waste Database): 000001451**

Collection method: Residues from flue gas treatment are collected directly from a ship with marked vehicles parked along the ship's side.

The port collection facilities are described in Tables 3 - 6.

7.5. Type and capacity of port facilities for collection of cargo residues

The entity contracted to provide services consisting in collecting, transporting and managing cargo residues is:

**ECO POINT P.S.A.
ul. Na Ostrowiu 1
80-958 Gdańsk**

**NIP (Tax ID): 5833171490
REGON (Business ID): 222159786
KRS (National Court Register no.): 0000523010
BDO (Waste Database): 000001451**

Collection method: Liquid and solid cargo residues are collected by lorries and/or tankers placed along a ship's side or from the water side by a marked barge.

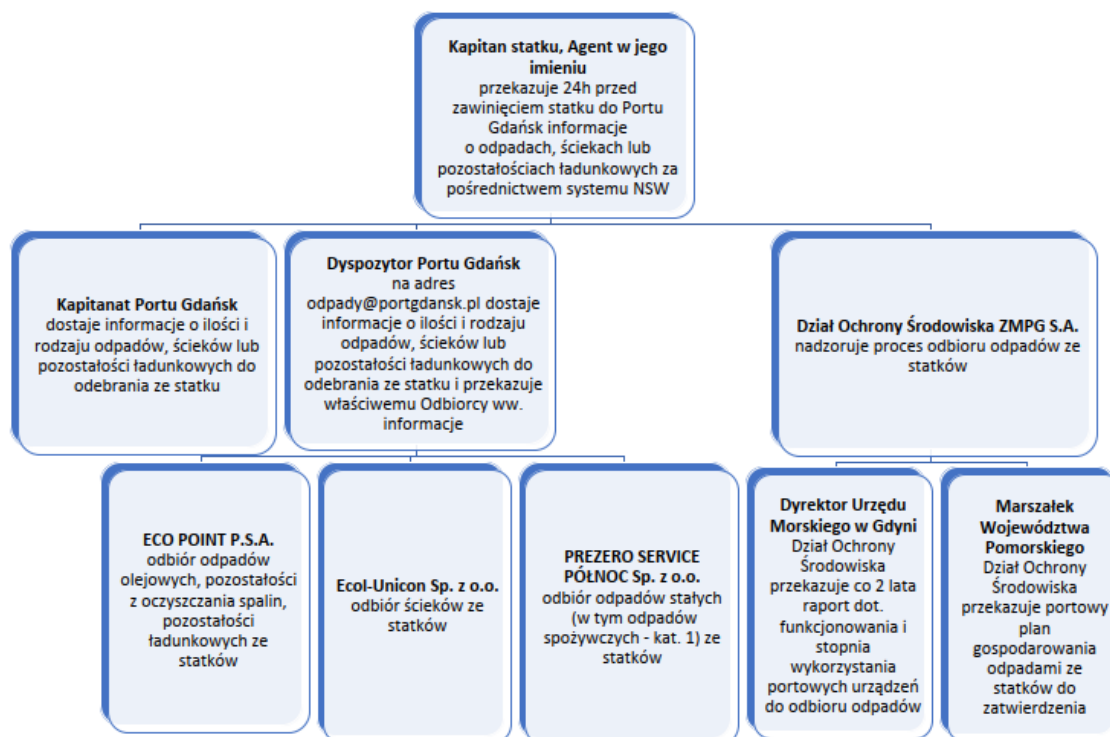
The port collection facilities are described in Tables 3 - 6.

8. DESCRIPTION OF WASTE COLLECTION FROM SHIPS AND STORAGE PROCEDURES (including wastewater, residues from flue gas treatment and cargo residues) INCLUDING LOCATIONS AND BUSINESS HOURS OF PORT FACILITIES COLLECTING WASTE FROM SHIPS

Waste from sea-going ships is collected in accordance with the Act of 12 September 2022 on port facilities for collecting waste and cargo residues and the principles set out in *“Port management plan for waste and cargo residues from ships at the Port of Gdańsk”*.

8.1. General information

- Waste collectors ensure that waste can be collected at any time, i.e. 24 hours a day, on any day of the week.
- Waste collectors collect any quantity of waste reported by the Chief Port Dispatcher Team in the “Information on waste to be collected”.
- Waste is collected during ship's stopover in the Port of Gdańsk, without unreasonable delays.
- In the event of an emergency occurring during collection service provision through the fault of ship that disposes of waste, the ship or its shipowner bears full legal and financial responsibility for any resulting damages.
- Waste (other than wastewater) collected cannot be stored, segregated, pre-treated, processed, mixed or otherwise treated in such a way as to change its nature or composition on the land under the control of the Port of Gdańsk Authority S.A.
- Waste collected from ships is transferred to selected locations for its further management.
- Waste is managed within the framework of the operation of the companies that directly receive it from ships and the management scope conforms to the decisions and permits held by these companies.



Kapitan statku. Agent w jego imieniu przekazuje 24h przed zawinięciem statku do Portu Gdańsk informacje o odpadach, ściekach lub pozostałościach ładunkowych za pośrednictwem systemu NSW	Ship captain. The agent on their behalf provides information on waste, wastewater or cargo residues through the NSW system 24h before calling at the Port of Gdańsk
Kapitanat Portu Gdańsk dostaje informacje o ilości i rodzaju odpadów, ścieków lub pozostałości ładunkowych do odebrania ze statku	Harbour Master's Office at the Port of Gdańsk receives information on the quantity and type of waste, wastewater or cargo residues to be collected from the ship
Dyspozytor Portu Gdańsk na adres odpady@portgdansk.pl dostaje informacje o ilości i rodzaju odpadów, ścieków lub pozostałości ładunkowych do odebrania ze statku i przekazuje właściwemu Odbiorcy ww. informacje	Dispatcher of the Port of Gdańsk receives information on the quantity and type of waste, wastewater or cargo residues to be collected from the ship (at odpady@portgdansk.pl) and forwards it to the relevant Collector
Dział Ochrony Środowiska ZMPG S.A. nadzoruje proces odbioru ze statków	Environmental Protection Department of ZMPG S.A. supervises the process of receiving waste from ships.
ECO POINT P.S.A. odbiór odpadów olejowych, pozostałości z oczyszczania spalin, pozostałości ładunkowych ze statków	ECO POINT P.S.A. collects oil waste, flue gas treatment residues and cargo residues from ships
Ecol-Unicon Sp. z o.o. odbiór ścieków ze statków	Ecol-Unicon Sp. z o.o. collects wastewater from ships
PREZERO SERVICE PÓLNOC Sp. z o.o. odbiór odpadów stałych (w tym odpadów spożywczych - kat. 1) ze statków	PREZERO SERVICE PÓLNOC Sp. z o.o. collects solid waste (including food product waste – cat. 1) from ships
Dyrektor Urzędu Morskiego w Gdyni Dział Ochrony Środowiska przekazuje co 2 lata raport dot. funkcjonowania i stopnia wykorzystania portowych urządzeń do odbioru odpadów	Director of the Maritime Office in Gdynia The Environmental Protection Department submits a report every two years on the functioning and utilisation of port waste reception facilities
Marszałek Województwa Pomorskiego Dział Ochrony Środowiska przekazuje portowy plan gospodarowania odpadami ze statków do zatwierdzenia	Marshal of the Pomorskie Province The Environmental Protection Department submits the port waste management plan from ships for approval

Table 9 General diagram of transferring information on the collection of waste, wastewater and cargo residues from ships

8.2. Procedures of notifying about waste collection (waste oil, solid waste including cat. 1 and wastewater, residues from flue gas treatment and cargo residues):

- 1) The ship's captain or ship's agent, prior to the ship's arrival at the Port of Gdańsk, provides information on any waste, wastewater, flue gas treatment residues and/or cargo residues intended for delivery to the port collection facilities using the control and information system for Polish ports (NSW). The ship's captain or agent is responsible for the accuracy of the data entered in the form in the NSW system, including the type, quantity and composition of the above-mentioned waste on board.
- 2) To deliver waste, flue gas treatment residues and/or cargo residues to the port collection facilities, the ship's captain or agent notifies the Port Dispatcher of all waste, wastewater, flue gas treatment residues and/or cargo residues to be delivered, using the "Form informing about waste on board to be delivered before arrival at the Port of Gdańsk", completed online or completed and sent via email or fax. This form is available at the ZMPG S.A. website (<https://www.portgdansk.pl/biznes/uslugi/odbior-odpadow/>) and constitutes Annex 3 to this plan.
- 3) The Port Dispatcher immediately notifies the Collector about waste, wastewater, flue gas treatment residues and/or cargo residues to be collected by completing the "Notification of waste for collection" form constituting Annexes 4 - 7, due to various types of waste collected.
- 4) The Collector is obliged to agree with the ship's representative on the exact waste collection date.

8.3. Procedures of collecting waste oil; solid waste including cat. 1 and wastewater, residues from flue gas treatment and cargo residues :

- 1) The collector makes available, in line with the arrangements made, waste collection equipment suitable for a given waste type:
 - for waste oil - vehicles for waste oil transport – either tanker trucks or water-side barges;
 - for wastewater - permanent land-side facilities or septic tanker trucks;
 - for solid waste - vehicles for solid waste transport;
 - for flue gas treatment residues - solid waste transport trucks or liquid waste tankers;
 - for cargo residues - lorries, truck tankers or barges on the water side.
- 2) Waste containing category 1 products of animal origin included in EC Regulation no. 1069/2009 are disposed of in line with this Regulation and Polish regulations on veterinary requirements (including the Act of 11 March 2004 on animal health protection and combating animal infectious diseases). Food product waste is collected, transported and managed by the Collector in a mode approved by the District Veterinary Officer.
- 3) Waste is collected from ships under sanitary quarantine in accordance with the State Border Sanitary Inspector's recommendations.
- 4) For solid waste collection:

- when waste is collected from the Naftoport, the Collector is obliged to collect waste on an ongoing basis by manually transporting it away from the fuel pier, loading it and transporting it to the waste management site;
 - when collecting waste from the Westerplatte Ferry Terminal (PŻB passenger ferries), the Collector leaves waste containers to be taken by the quay operator at the side of the ferry and places waste in them during the voyage. The quay operator removes the waste from the ferry during its stay in the Port of Gdańsk, and the collection service is provided after the ferry departs from the Port of Gdańsk. Empty containers are prepared on the Westerplatte Ferry Terminal premises (in a selected location) and the quay operator transfers them onto the ferry after full containers are removed.
- 5) The Collector transports waste, wastewater, residues from flue gas treatment and/or cargo residues to a waste management facility.
 - 6) In the event in any disturbances in waste, wastewater, residues from flue gas treatment and/or cargo residue collection, the Collector collects the waste recording any possible difficulty on the waste collection receipt (for solid waste, waste oil, wastewater, residues from flue gas treatment) or on a cargo residue collection receipt (for cargo residues). Specimens of waste collection receipts are provided in Annexes 8 - 10 (in relation to various waste types). A specimen of cargo residue collection receipt is provided in Annex 11.
 - 7) In case waste cannot be collected through the ship's fault, the Collector is obliged immediately inform the Chief Dispatcher of the Port of Gdańsk (Tel: +48 58 737 64 83, email: odpady@portgdansk.pl i odpady-srodowisko@portgdansk.pl) of this fact.
 - 8) In the event of a delay (through the ship's fault) in collecting the waste, in relation to the exact date agreed between the Collector and the ship's captain or agent, the Collector is entitled to remuneration - for each hour of waiting for waste transfer, through the ship's fault.
 - 9) In case collecting waste from a ship is impossible (through the ship's fault) after the exact date of collection has been agreed between the Collector and the ship's captain or agent, the Collector is entitled to remuneration - for each hour of waiting for waste transfer, through the ship's fault.

8.4. Document flow procedures:

- 1) The Collector, after collecting waste, wastewater, flue gas treatment residues and/or cargo residues, fills in the waste collection receipt (for solid waste, waste oil, wastewater, residues from flue gas treatment) or uses the cargo residue collection receipt (Annexes 8 - 11) to confirm the type and quantity of collected waste, wastewater, flue gas treatment residues and/or cargo residues plus and waiting time. The waste collection receipt and/or cargo residues collection receipt must be signed by an authorised representative of the ship and Collector. The above-mentioned documents must be signed in writing; signing via electronic means is also permissible, i.e. the Collector, after collecting waste from a ship, fills in the waste collection receipt and/or cargo residue collection receipt and sends a scanned document or submits it in person to the shipowner's representative, i.e. Maritime Agent. The Maritime Agent signs the document received online or in person, and the scan of the signed document is sent or handed over personally to the Collector's representative, which confirms service provision.

- 2) The settlements with the Collector are based on the quantity of waste, wastewater, residues from flue gas treatment and/or cargo residues indicated in the waste collection receipts and/or cargo residue collection receipts.
- 3) A signed waste collection receipt and/or cargo residue collection receipt is each time submitted by the Collector, at the latest on the first working day (without undue delay) after obtaining confirmation of service provision to the ZMPG S.A. Invoicing Department (oplatyportowe@portgdansk.pl) and ZMPG S.A. Environmental Protection Department (odpady-srodowisko@portgdansk.pl).
- 4) The waste collection receipt and the cargo residue collection receipt must contain the correct names of the Shipowner's Representative – Maritime Agent and information on the exact conditions under which the waste was collected.
- 5) The Collector creates a statement of the quantities and types of waste, wastewater, residues from flue gas treatment and/or cargo residues collected from ships calling in at the Port during the accounting month (Annexes 12 – 16), which they send in an electronic form to the email address: odpady-srodowisko@portgdansk.pl by the 7th day of the next accounting month.
- 6) The Collector shall draw up a “Service provision acceptance protocol” form, specimens of which are provided in Annexes 17–20, depending on the type of waste, wastewater, flue gas treatment residues and/or cargo residues, and submits it to the designated ZMPG S.A. employee, together with a waste collection receipt and/or cargo residue collection receipt, by the 7th day of the next accounting month.
- 7) The service provision acceptance protocol is approved by a designated ZMPG S.A. employee, after prior verification of the compliance of the document with the Invoicing Department. The service provision acceptance protocol is the basis for issuing an invoice.

8.5. Procedure for collecting cargo residues by the Collector from a ship

Pursuant to Art. 6 of the Act of 12 May 2022 on port facilities for receiving waste from ships, ZMPG S.A. ensures the collection of cargo residues through waste collection facilities of the company, Eco Point P.S.A.

However, in accordance with the provisions of paragraph 5 of Art. 25 of the above-mentioned Act, the Collector of the cargo from the ship has the right to ensure the collection of the residues of this cargo on its own. In such case, the Collector of the cargo residues from the ship in the area of the Port of Gdańsk is obliged to:

1. hold a decision in the field of waste management (a permit to collect and/or process waste, in particular waste constituting cargo residues from a ship, or its activity should be listed in the register kept by the Marshal of the Province in accordance with the provisions of the Waste Act of 14 December 2012;
2. be included in the List of Collectors of Cargo Residues on the ZMPG S.A. Territory, available on the website, at: <https://www.portgdansk.pl/biznes/uslugi/odbior-odpadow/>;
3. submitting, in advance, the above-mentioned documents to the ZMPG S.A. Environmental Protection Department. Upon a positive assessment of the submitted documents, the entrepreneur will be entered in the “List of companies providing the service of collecting cargo residues from ships on the premises of ZMPG S.A.”, which is regularly updated;

4. providing the ZMPG S.A. Environmental Protection Department with quarterly information on the types and quantities of cargo residues collected from sea-going ships in the Port of Gdańsk. Failure to meet the above-mentioned conditions will result in removing the entrepreneur from the list;
 5. informing the port manager of the planned cargo residue collection from the ship, 24 hours in advance by email:
 - a) in the case of collecting cargo residues from the land side, to the following email addresses:
 - odpady-srodowisko@portgdansk.pl,
 - odpady@portgdansk.pl,
 - dowodca.zmiany@portgdansk.pl,notification containing: the name of the facility to be accessed, the name of the ship from which the waste will be collected, the name of the driver as well as the make and registration number of the vehicle. Based on the above data, a one-time pass will be issued. In the absence of a notification sent to the above addresses, the Collector will not be issued a one-time pass enabling entry to the area of the Port of Gdańsk;
 - b) in the case of cargo residue collection from the waterside, to the following email addresses:
 - odpady-srodowisko@portgdansk.pl,
 - odpady@portgdansk.pl,
 - kpgoficer@umgdy.gov.pla notification containing: the name of the ship from which the waste will be collected and the details of the unit for the collection of cargo residues. In the absence of a notification sent to the above addresses, the Collector will not be authorised to collect cargo residues.
6. provide a document confirming the collection of cargo residues from the ship to the following email address: odpady-srodowisko@portgdansk.pl.

9. BILLING SYSTEM DESCRIPTION

Pursuant to Chapter 4 of the Act of 12 May 2022 on port facilities for receiving waste from ships, in the Port of Gdańsk, shipowners pay indirect, additional and special fees for ship waste collection and treatment.

- a) An indirect fee is understood as a fee for port services provided by port collection facilities for ship waste, which is paid by each ship regardless of the actual ship waste disposal. This fee fully covers the costs of collecting and treating waste from ships as defined in Annex V to MARPOL, including waste related to cargo waste, other than cargo residues and passively fished waste. The indirect fee does not include the collection and treatment of waste from the flue gas treatment systems. The indirect fee also includes collection and treatment of the following quantities of waste oil and wastewater, i.e. the “limit”, as specified in the *Price list for ship waste collection and management services*.
- b) Additional quantities of waste from ships not included in the indirect fee are covered by the additional fee. This fee is also charged for waste specified in Annex V to MARPOL, if its quantity exceeds the maximum ship storage capacity declared in line with the regulations issued on the basis of Art. 10, section 6 of the Act on preventing marine pollution from ships, and for waste from flue gas treatment systems.

- c) Collection of waste from ships in time and on conditions different than specified in “*Port plan for management of waste from ships in the Port of Gdańsk*” as standard conditions (chapters 6.1 - 6.5) is subject to a special fee being an additional fee for each cubic metre of waste collected.

The amount of this fee varies in line with the following criteria:

- 1) ship category, type and size;
- 2) ship waste characteristics and type.

The amount of fees may be reduced on the basis of the following criteria:

- 1) the nature of the shipping in which the vessel is engaged, in particular short sea shipping;

Once the term ‘short sea shipping’ has been defined in the Polish legal system and the tools for its verification are defined in the Polish legal system, the above criterion shall mean a reduction in port fees, in accordance with the currently updated *Price list for ship waste collection and management*, available at: <https://www.portgdansk.pl/biznes/uslugi/taryfy-portowe/>.

- 2) the design, equipment and operation of a ship, which result in a reduced amount of ship-generated waste and the sustainable and environmentally sound management of ship-generated waste, taking into account the criteria set out in Commission Implementing Regulation (EU) 2022/91 of 21 January 2022 laying down criteria for determining whether a ship generates a reduced amount of waste and whether waste is managed in a sustainable and environmentally friendly manner in accordance with Directive (EU) 2019/883 of the European Parliament and of the Council (OJ EU L 15 of 24 January 2022, p. 12).

ZMPG S.A. has introduced a discount on the tonnage fee for ships calling at the Port of Gdańsk, to which ships with the appropriate number of items in the ESI system (www.environmentalshipindex.org) are entitled. Detailed information on how to obtain this discount is available on the ZMPG S.A. website at: <https://www.portgdansk.pl/biznes/uslugi/taryfy-portowe/>.

The shipowner also pays a fee for the collection and treatment of cargo residues from the ship, unless the collector of the cargo from the ship collects cargo residues from the ship on their own.

The up-to-date *Price list for ship waste collection and management services* is available on the ZMPG S.A. website at: <https://www.portgdansk.pl/biznes/uslugi/taryfy-portowe/>. ZMPG S.A. reserves the right to modify this *Price list*.

A ship that, in line with Art. 10, section 16 of the Act on preventing marine pollution from ships, is exempted from the obligation to provide advance notice of waste on board of ships, to remove waste from ships before departure from the port or marina and to pay an indirect fee each time, is billed for waste collection at the rates specified in the *Price list* as an additional or special fee, without payment of any indirect fee. This billing system is subject to an agreement concluded by ZMPG S.A. and the shipowner.

In the event of concluding an agreement directly with the waste recipient, pursuant to Article 10, section 16, item 2a) of the aforementioned Act, the recipient of waste from a ship in the Port of Gdańsk is obliged to:

1. hold a decision on waste management (authorisation for collection and/or authorisation for processing of waste, and its activity shall be registered in the register kept by the Marshal of the Province in accordance with the provisions of the Waste Act of 14 December 2012;

2. be included in the List of waste recipients within the territory of ZMPG S.A., available on the website at: <https://www.portgdansk.pl/biznes/uslugi/odbior-odpadow/>, providing the Environmental Protection Department of ZMPG S.A. with quarterly information on the type and quantity of waste collected from sea-going vessels in the Port of Gdańsk. Failure to meet the above-mentioned conditions will result in removing the entrepreneur from the list;

3. inform the manager of the port of the intended collection of waste from the ship 24 hours in advance by sending an e-mail:

a) in the case of collecting waste from the land side, to the following email addresses:

- odpady-srodowisko@portgdansk.pl,
- odpady@portgdansk.pl,
- dowodca.zmiany@portgdansk.pl

notification containing: the name of the facility to be accessed, the name of the ship from which the waste will be collected, the name of the driver as well as the make and registration number of the vehicle. Based on the above data, a one-time pass will be issued. In the absence of a notification sent to the above addresses, the Collector will not be issued a one-time pass enabling entry to the area of the Port of Gdańsk;

b) in the case of waste collection from the waterside, to the following email addresses:

- odpady-srodowisko@portgdansk.pl,
- odpady@portgdansk.pl,
- kpgoficer@umgdy.gov.pl

a notification containing: the name of the ship from which the waste will be collected and the details of the unit for the collection of cargo residues. If no notification is sent to the above addresses, the recipient shall not be granted consent to collect the waste.

4. provide a document confirming the collection of waste from the ship to the following e-mail address: odpady-srodowisko@portgdansk.pl.

10. PROCEDURE FOR REPORTING IRREGULARITIES CONCERNING PORT FACILITIES FOR WASTE COLLECTION FROM SHIPS

All entities participating in the waste collection procedure (ship captains, agents, waste collectors and other interested parties) can obtain all information, as well as make comments or report irregularities regarding the port collection facilities to the relevant services of ZMPG S.A., for the contact data, see *Chapter 12*.

If the captain of a ship calling in at a port or marina finds that the port collection facilities do not function as required, or if the captain is not informed about this fact by the entity managing the port or marina, then the captain has the right to report all irregularities to the competent Director of the Maritime Office. See the form on the ZMPG S.A. website, at <https://www.portgdansk.pl/biznes/uslugi/odbior-odpadow/> and in Annex 21 to this plan.

Information on insufficient capacity of collection facilities

If the collection of certain types and quantities of waste from a ship by the port collection facilities is impossible, the ship's captain or their agent will receive information about this fact from the Main Port Dispatcher's Team², immediately after submitting the notification of their intention to deliver waste. Simultaneously, the nearest port or marina ready to collect waste and cargo residues from the ship will be indicated.

11. COOPERATION WITH OTHER ENTITIES IN TERMS OF WASTE AND SHIP CARGO RESIDUE MANAGEMENT

Port of Gdańsk Authority S.A. does not have its own port collection facilities for waste and waste water from ships. In order to collect waste from ships calling in at the Port of Gdańsk, specialist companies with suitable waste collecting equipment and suitable capabilities for waste received from ships. All entities contracted to provide services consisting in collecting waste hold all permits and decisions required by the applicable laws.

12. SUPERVISION OVER SHIP WASTE AND CARGO RESIDUE MANAGEMENT ENSURED BY THE PORT MANAGEMENT ENTITY

Contact details of persons performing, at Port of Gdansk Authority S.A., activities related to supervision over the correct course of the process of managing waste and cargo residues from ships:

General matters related to waste management and environmental protection:
Environmental Protection Department

Tomasz Kolicki - Environmental Protection Department Manager

tel: 58 737 93 17

e-mail: odpady-srodowisko@portgdansk.pl

Agata Miecznikowska – Environmental Protection Specialist

tel: 58 737 93 12

e-mail: odpady-srodowisko@portgdansk.pl

Marta Bystrzanowska - Environmental Protection Specialist

tel: 58 737 96 65

e-mail: odpady-srodowisko@portgdansk.pl

Payment issues:

PGA S.A. Invoicing Department

tel: 58 737 95 74

e-mail: oplatyportowe@portgdansk.pl

Coordination of submitted forms:

Chief Port Dispatcher

Tel: (+48) 58 737 64 83/84, 58 737 93 05

Email: odpady@portgdansk.pl

Questions and Complaints:

email: reklamacje@portgdansk.pl (with the name of the ship in the title)

13. DESCRIPTION OF PROCEDURES FOR SOCIAL CONSULTATIONS CONDUCTED DURING THE PORT PLAN UPDATING PROCESS

The necessity to run social consultations results from Art. 13, section 3 of the Act of 12 May 2022 on port facilities for collection of waste from ships.

The draft of the update of the “*Port plan for management of waste from ships in the Port of Gdańsk*” is subject to consultation with the users of the port, including collectors of waste from ships. Consultations are conducted by publishing the draft of the update of this plan on the Port of Gdańsk Authority S.A. website, at: <https://www.portgdansk.pl/biznes/uslugi/odbior-odpadow/>, including the information on the possibility of making comments and the consultation period provided. Comments should be submitted by email to: odpady-srodowisko@portgdansk.pl.

Between 25/10-08/11/2024, the Port of Gdańsk Authority S.A. consulted port users, ship waste collectors, organisations implementing extended producer responsibility obligations and community organisations. The consultations were conducted by publishing the draft of the “*Port plan for management of waste from ships in the Port of Gdańsk, October 2024*”, on the ZMPG S.A. website, at: <https://www.portgdansk.pl/biznes/uslugi/odbior-odpadow/>, with the information on the possibility of submitting comments and the deadline for doing so.

During the designated period, two notifications of no comments on the document were received at the above email address.

14. DESCRIPTION OF METHODS OF RECORDING THE CURRENT USE OF PORT FACILITIES FOR WASTE COLLECTION FROM SHIPS AND QUANTITIES OF WASTE DISPOSED OF BY SHIPS

The port collection facilities for ship waste primarily include mobile equipment, i.e.:

- a) for waste oil - truck tanks and barges with metering systems;
- b) for wastewater - truck tanks and permanent wastewater collection facilities with metering systems at the Westerplatte, Ziółkowskiego and Wisłoujście Quays;
- c) for solid waste - trucks transporting containers with waste packed in bags.

Therefore, the ongoing recording system of the use of port collection facilities for ship waste uses data on the amount of waste actually disposed of by ships.

In order to ensure ongoing recording of quantities of waste collected from ships in the Port of Gdańsk, the “Receipts for waste release from ships” are used and contain the following information:

details of the ship, transport company, means of transport, waste holder taking delivery of the

waste, time and place at which waste was collected, type and code of the waste collected and its quantity. The aforementioned receipts are submitted to the ZMPG S.A. services on an ongoing basis. ZMPG S.A. uses them to develop and update the statements of quantities of waste disposed of by ships. Moreover, every month, ZMPG S.A. receives a statement of the quantities of waste disposed of by ships from the waste collectors. The quantities of waste collected are verified by comparing the data contained in the statements, and any discrepancies are explained on an ongoing basis.

15. ANNEXES:

1. Map of the Port of Gdańsk (July 2023)
2. Permissible limit values for pollution indicators in industrial wastewater discharged into sewerage facilities and permissible concentrations of gases and vapours in the air section of sewerage equipment
3. Form 1 - information on waste on board of a ship before entering the Port of Gdańsk
4. Information on waste to be collected - waste oil and residues from flue gas treatment
5. Information on waste to be collected - solid waste
6. Information on waste to be collected - wastewater
7. Information on waste to be collected - cargo residues
8. Waste collection receipt form - waste oil and residues from flue gas treatment
9. Waste collection receipt form - solid waste
10. Waste collection receipt form - wastewater
11. Waste collection receipt form - cargo residues
12. Monthly statement - waste oil and its mixtures and flue gas treatment residues
13. Monthly statement - solid waste
14. Monthly statement - liquid cargo residues
15. Monthly statement - solid cargo residues
16. Monthly statement - wastewater
17. Service provision acceptance protocol - waste oil and residues from ship fuel treatment
18. Service provision acceptance protocol - solid waste
19. Service provision acceptance protocol - wastewater
20. Service provision acceptance protocol - cargo residues
21. Report on alleged deficiencies of port collection facilities